

# State of Wyoming Corner Record

(In compliance with the CORNER PERPETUATION AND FILING ACT, Wyoming Statutes, 1977, Section 38-11-101, et. seq., and the Rules and Regulations of the Board of Registration for Professional Engineers and Professional Land Surveyors.)

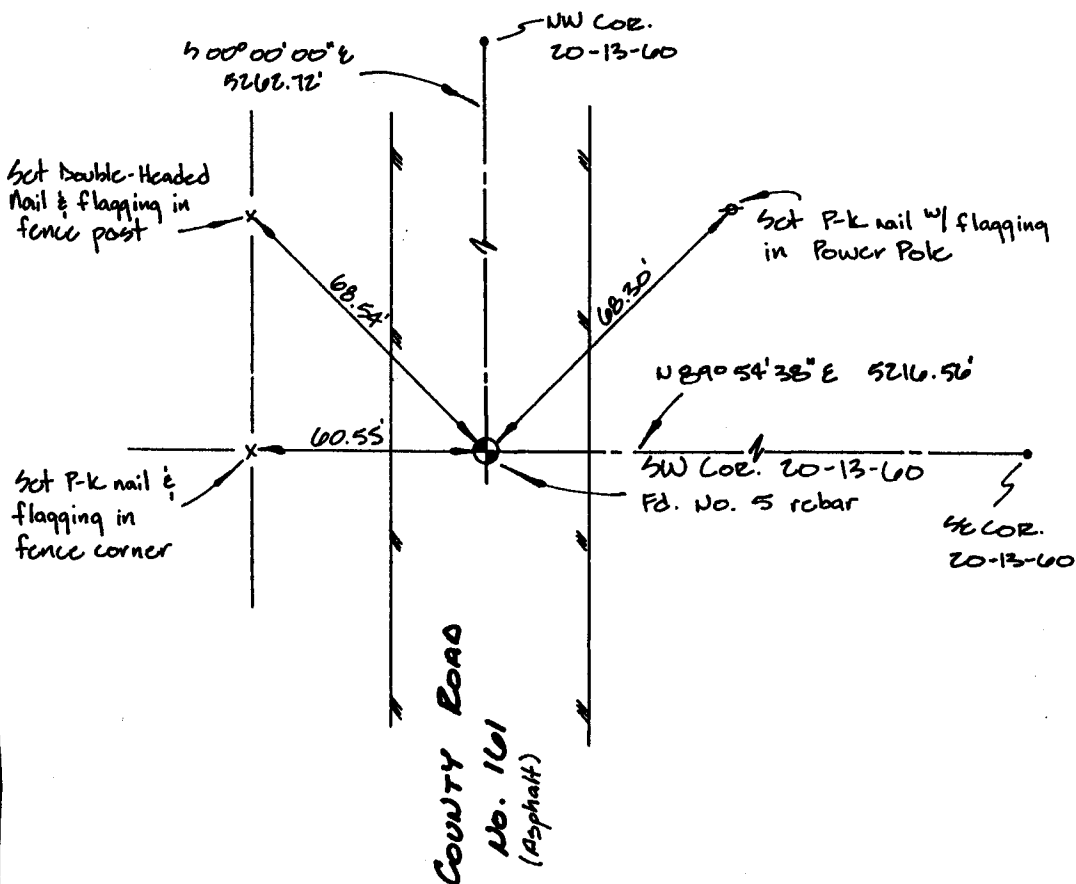
Reverse side of this form may be used if more space is needed.

Record of original survey and citation of source of historical information (if corner is lost or obliterated). Description of corner monumentation evidence found and/or monument and accessories established to perpetuate the location of this corner. Sketch of relative location of monument, accessories, and reference points with course and distance to adjacent corner(s) (if determined in this survey). Method and rationale for reestablishment of lost or obliterated corner.

**SW COR. SEC. 20-T13N-R60W**  
**FOUND NO. 5 REBAR (no markings)**

RECEIVING  
 LARAMIE COUNTY CLERK  
 CHEYENNE, WY  
 1995 MAY 12 PM 2:16

**162003**



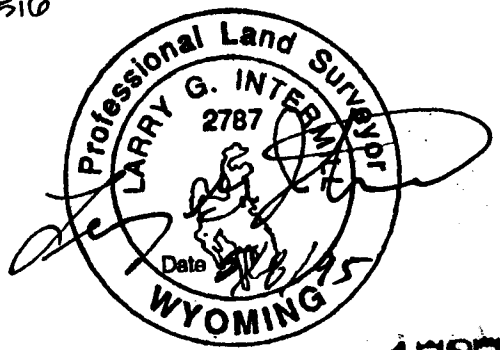
Date of Field Work: 4-12-95 Office Reference: \_\_\_\_\_

**CROSS INDEX DIAGRAM**

	1	2	3	4	5	6	7	8	9	10	11	12	13	14	15	16	17	18	19	20	21	22	23	24	25
A																									
B																									
C																									
D																									
E																									
F																									
G																									
H																									
I																									
J																									
K																									
L																									
M																									
N																									
O																									
P																									
Q																									
R																									
S																									
T																									
U																									
V																									
W																									
X																									
Y																									
Z																									

Firm/Agency, Address  
 PREPARED BY: \_\_\_\_\_  
 This corner record was prepared by me or under my direction and supervision.

**SEAL & SIGNATURE**  
 INTERMILL LAND SURVEYING, INC.  
 1301 N. Cleveland Ave.  
 Loveland, CO. 80537  
 (970) 669-0516



**1787**